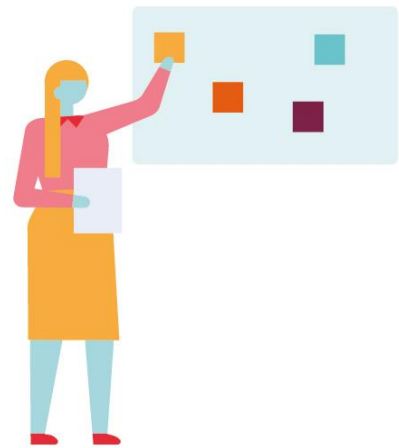


## Inspiring Futures evaluation

Summary for policymakers and strategic stakeholders

Cordis Bright  
August 2023



# Introduction

## About Inspiring Futures

Youth Futures Foundation (YFF) is an independent, not-for-profit organisation established with a £90m endowment from the Reclaim Fund to improve employment outcomes for young people from marginalised backgrounds. Our aim is to narrow employment gaps by identifying what works and why, investing in evidence generation and innovation, and igniting a movement for change.

The COVID-19 outbreak exacerbated multiple challenges for young people looking to access further education, training and work. As a rapid response to the pandemic YFF in partnership with BBC Children in Need (BBC CIN) developed Inspiring Futures, a £7 million grant funding programme to deliver positive activities that aimed to support children and young people who face the greatest disadvantage to achieve their potential in their journey towards employment.

85 Voluntary and Community Sector (VCS) organisations in England received grants, ranging between £10,000 and £80,000 in value and 12 to 18 months in length.

## About the evaluation

[Cordis Bright](#) is an independent research organisation commissioned to evaluate the Inspiring Futures programme on behalf of BBC CiN and YFF.

This summary report presents the key findings of relevance to policy makers. Further detail can be found in the main final evaluation report which can be accessed [here](#).

# Key findings

## The implementation of Inspiring Futures

Inspiring Futures was an ambitious programme with a wide reach, supporting over 15,000 children and young people which exceeded the target by 15%.

The flexibility of the funding enabled grantees to prioritise their key areas of need which included:

- Staying afloat during the pandemic.
- Continuing and expanding their delivery for children and young people.
- Adapting delivery to the COVID-19 context.
- Supporting families with basic needs.

This adaptable approach was enabled by flexible grant management and a broad remit for the programme and the models of delivery, which were viewed as key success factors.

## Responding to need during the COVID-19 pandemic

The COVID-19 pandemic disrupted children and young people's daily lives and pathways to employment. Grantees adapted their support to focus on children and young people's 'personal and social development' outcomes where they had identified greatest need, including:

- Confidence, self-esteem, and motivation.
- Mental health and wellbeing.
- Basic needs (accommodation, food, safety).
- Communication, social, and life skills.

Grantees, young people and stakeholders agreed that these personal and social development outcomes are both important pre-cursors to education, employment and training (EET) outcomes, and important outcomes in and of themselves.

## The difference made by Inspiring Futures

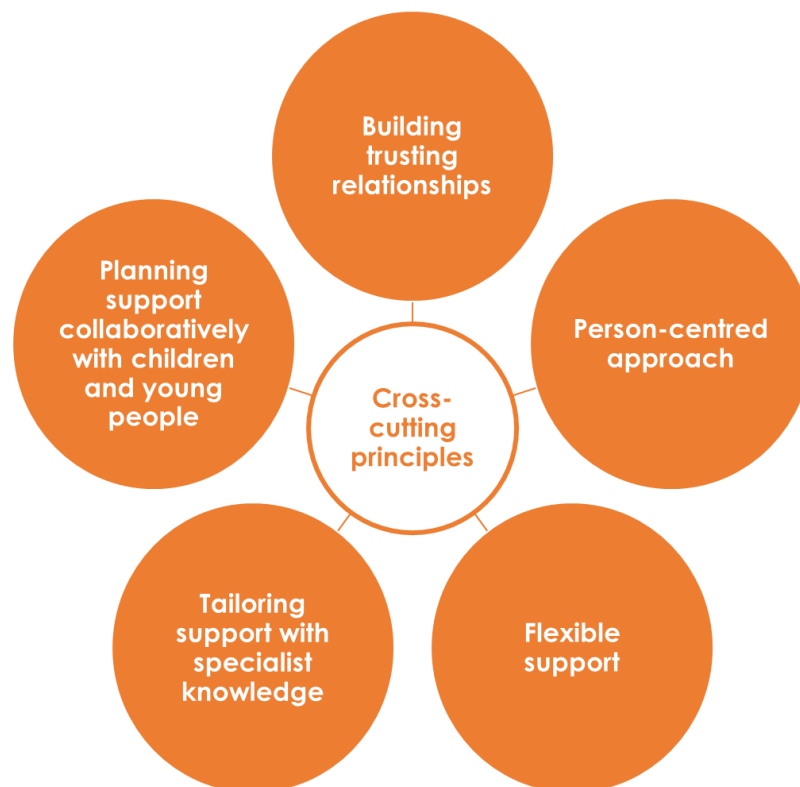
Inspiring Futures achieved its primary aim of supporting **grantees** to continue delivery and adapt as needed during the COVID-19 pandemic.

**Children and young people** most commonly achieved personal and social development outcomes such as increased confidence and self-esteem and improved life skills, as well as EET outcomes such as entry to employment, engagement and achievement in EET and work experience.

There were also some positive outcomes for **family members**, including improved relationships and mental health and wellbeing.

### Lessons for practice

Five key elements of effective practice were identified as being relevant across project types:



In recovering from the pandemic, future employability provision should:

- Support personal and social development outcomes to build the base for EET outcomes.
- Continue to respond to the ongoing impacts of the pandemic on needs, challenges, and opportunities.
- Be able to adapt and respond to the changing wider context and in particular the cost-of-living crisis.

## Implications for future commissioning and policy

For future commissioning of EET support for children and young people, funders could consider supporting service providers with:

- Long-term funding.
- Funding that can be used flexibly and for organisational development.
- Opportunities to share learning and network with other VCS organisations.
- Capacity-building including: training opportunities (in particular with online safeguarding and providing mental health and wellbeing support); organisational development; support with accessing funding; and embedding more robust monitoring and evaluation approaches.

## Recommendations

The recommendations in the table below were co-developed during a series of workshops with programme stakeholders, young peer researchers, strategic stakeholders with policy insight, and grantees.

The numbers in the right-hand column correspond to the Section in the final report where you can read more context to the recommendations.

Recommendation	Audience				Section in final report
	Practitioners	Policymakers	Funders	Commissioners	
Employability support					
Continue things that worked well during the COVID-19 pandemic and do not automatically revert to the old ways of working.					5.3, 5.4, 6.3
Review this report and consider the best mechanisms to support good practice such as aspects of delivery, funding evaluations and projects to spread and scale effective practice.					6
Continue to acknowledge and support the development of personal and social development outcomes that may precede EET outcomes.					5.3.2, 6.3, and Impacts of COVID-19 report
Review and research what adaptations service providers made during the pandemic and have kept to assess whether they are effective, including understanding (1) whether they have responded to the increased prevalence and need relating to personal and social development needs and (2) how efficacy varies between face-to-face versus virtual or hybrid support delivery.					5.4.1, and Impacts of COVID-19 report

Recommendation	Audience				Section in final report
	Practitioners	Policymakers	Funders	Commissioners	
Explore the potential of providing longer-term support for children and young people, in particular, those who are considered furthest from the labour market.					6, and Impacts of COVID-19 report
Continue to encourage and use participatory approaches in policy making, funding, commissioning, service design, research and evaluation.					2.3, 4.6, 5.3, 6.3, 6.4
Funding and commissioning					
Work collaboratively to develop long-term investment strategies for young people's employability support.					6.4, 6.5
Build on the 'light-touch' application process and grant management approaches employed by Inspiring Futures.					6.5
Exploring funding organisational capacity building, to support aspects other than service delivery, such as improving data collection strategy.					6.5
Explore ways to move towards longer-term funding arrangements to support projects to be					6.4, 6.5

Recommendation	Audience				Section in final report
	Practitioners	Policymakers	Funders	Commissioners	
implemented, embedded and perform in local systems. <sup>1</sup>					
Include capacity building funding in agreements with service providers to cover the cost of monitoring data capture, analysis, evaluation and reporting.					6.5
Establish robust processes to support providers when funding comes to an end, and to support children and young people when this may interrupt or prevent delivery.					6.5
Review and use current and future levers to encourage greater networking and collaboration between VCS employability service providers.					5.4, 6.5
Evaluation and evidence base					
Explore models of outreach support, working closely with providers to pilot models and evaluate their impact on reaching target groups and generating EET outcomes.					5.3

<sup>1</sup> Research conducted by Kluve et al. (2017) provides further exploration of the potential of longer-term support for young people's labour market outcomes. Source: Kluve, J. et al (2017). *Interventions to improve the labour market outcomes of youth: A systematic review of training, entrepreneurship promotion, employment services and subsidized employment interventions*. Available at: <https://onlinelibrary.wiley.com/doi/full/10.4073/csr.2017.12> [Accessed 18.07.2023]



Recommendation	Audience				Section in final report
	Practitioners	Policymakers	Funders	Commissioners	
Create an environment in which employability service providers are able and committed to: (1) develop and share their theories of change, and (2) articulate and document their models of delivery including considerations of protocolisation/manualisation.					4.5
Ensure that the link between evidence and practice is central to service delivery by collecting appropriate and proportionate activity and outcomes monitoring, designing and developing robust impact evaluations, and mobilising evidence effectively to inform practice.					2.4

# Acknowledgements and contact details

## Contact details

To find out more about Inspiring Futures or the evaluation, please get in touch using the details below.

### Youth Futures

- Matthew Poole: [matthew.poole@youthfuturesfoundation.org](mailto:matthew.poole@youthfuturesfoundation.org)

### Cordis Bright

- Anna Manning: [annamanning@cordisbright.co.uk](mailto:annamanning@cordisbright.co.uk)
- Dr. Stephen Boxford: [stephenBoxford@cordisbright.co.uk](mailto:stephenBoxford@cordisbright.co.uk)
- The evaluation team [info@cordisbright.co.uk](mailto:info@cordisbright.co.uk)

### BBC Children in Need

- Rachel Carter: [rachel.carter03@bbc.co.uk](mailto:rachel.carter03@bbc.co.uk)

## Acknowledgements

We would like to thank all the stakeholders and children and young people for providing their time, experience, and expertise in participating in this research. Without their support this research would not have been possible.

This includes:

### *Inspiring Futures grantees*

Inspiring Futures grantees	
Amaze Brighton & Hove	New Era Foundation
Ansbury	Nightsafe
Artcore Limited	Nightstop Communities Northwest CIC
Aston Mansfield Charity	Not Pants CIC
Aston Villa Foundation	Nova New Opportunities
Autism Bedfordshire	Oxfordshire Youth
AutismAble CIC	Pedestrian Ltd
Babbasa Youth Empowerment Projects CIC	Prior's Court Foundation

Inspiring Futures grantees	
Basingstoke Voluntary Services	Recre8now
Beap Community Partnership	Redcar & Cleveland Mind
Bradford College	Rubygirl Limited
Breaking Barriers	Saints Foundation
Buckinghamshire Disability Services (BuDS)	Salmon Youth Centre In Bermondsey
Carefree - Fostering Independence Cornwall	Society for the Advancement of Black Arts
Carers Trust Heart of England	Soft Touch Arts Ltd
Centre of Wellbeing, Training & Culture	Sound Connections
Circle Community	Sport 4 Life UK
Company Three	Step by Step
Construction Industry Trust for Youth	Team Domenica
Creative Youth Network	The Diana Award
Cripplegate Foundation	The Juno Project
Damilola Taylor Trust	The Manchester Deaf Centre Ltd
Derbyshire Autism Services Group (D.A.S.G.)	The Melton Learning Hub
Ellesmere Youth Project	The Mustard Tree Foundation (Reading)
FACE - Family and Community Enterprise	The Platform Project
Flying Futures CIC	The Proud Trust
Football Unites, Racism Divides Educational Trust	The Royal School for the Blind
Friends, Families & Travellers	Toranj Tuition
Gateway Support Group	Transform Training
Getaway Girls	Trelya
Globalmama Enterprises Limited	UpRising Leadership
Golden Opportunity Skills and Development (GOSAD)	Warwickshire Community and Voluntary Action

Inspiring Futures grantees	
Groundwork Cheshire, Lancashire and Merseyside (AKA Groundwork Lancashire West & Wigan Limited)	WATCH Ltd
Health For All (Leeds)	Westminster House Youth Club
Hearts and Minds	Windsor Fellowship
Highfields Community Association	YES OUTDOORS
Hillingdon Autistic Care & Support	YMCA Derbyshire
InUnity Ltd	YMCA East Surrey
Jacari	YMCA Milton Keynes
Lancashire Women	YMCA Norfolk
Lighthouse Futures Trust	Your Own Place CIC
MATRIX Neurological	YWCA England and Wales t/a Young Women's Trust
Mencap Ealing	

*BBC CiN staff*

- The Inspiring Futures project was an effort across multiple teams at BBC Children in Need.

*YFF staff*

- Emily Preston-Jones – Evaluation Manager for Inspiring Futures
- Matthew Poole – Director of Grants and Investment
- Jane Colechin – Deputy Director of Impact and Evidence
- Catherine Fitzgerald
- Shivonne Gates

*YRG team members*

- Caroline Appleton
- Josh Campbell
- Louise Chandler
- Katie Douglas
- Nyasha Duri
- Anisha Rahman
- Fahmida Yasmin